



# Entwistle School Development Plan 2023/2024



*Our Students Get Our Best*



# Principal's Message

2023/2024 is an exciting year for the students and staff of Entwistle School. We are moving together on a path where we hope to balance strong literacy and numeracy growth with a keen focus on career pathways. We have a golden opportunity to provide a variety of programming for our students that will enhance their experiences beyond our walls and ensure that they have the chance to discover their passions which will help to shape their future goals. We are a small rural school with a supportive community which means that we are uniquely positioned to offer myriad ways for our students to learn and grow. This year we will strive to strengthen our school culture of high academic and character expectations, and we will increase parent and community involvement in our school. Our students are incredible and deserve to have every opportunity to shine; whether that be through academics, fine and performing arts, music, sports, agriculture, computing science, student leadership, and more, we will find ways to engage our students and ensure that at all grades they have the chance to build a variety of skills that will help provide a more well-rounded educational experience. Our staff are dedicated and we are looking forward to a fantastic year where we continue our cherished traditions and look to create new ones as well. It is my honour to serve as Principal of Entwistle School and I look forward to continuing my journey alongside our students, staff and community.

All the best,  
Mrs. Bileau



# School Context

Entwistle School is a K-9 school located on the banks of the Pembina River, at the far West boundary of Parkland County. Our school building opened in 1956, and has undergone multiple add-ons and renovations to accommodate the population of our surrounding community. We are looking forward to welcoming approximately 110 students in the 2023/2024 school year along with 13 staff members, including a .2 School Counsellor. We serve the surrounding community which consists of students living in the Hamlet of Entwistle, on farms and acreages, and across the river in Evansburg and area. We also house the Pembina Playschool. We have a kitchen facility which means that we can offer Food Studies classes as well as have ample space for community meals and to prepare food for our students. Parkland School Division has applied for a number of grants which allows us to keep our nutrition nook fully stocked and Brightwood Ranch sponsors our breakfast program. We have a public library and swimming pool within walking distance from the school and we are fortunate to have the Pembina Provincial Park trails directly across from our school grounds. We work in partnership with CFL and Tomahawk School to provide Outdoor Pursuits programming for a number of our students, and are embarking on a journey to bring unique experiences to our students every Friday in hopes of creating a richer and more well-rounded school experience. We are an inclusive school that thrives on our robust community connections and supportive School Council. At Entwistle School, we believe that everyone belongs and we are better together!



# PSD VISION, MISSION, VALUES

**VISION:** Our students possess the confidence, resilience, insight, and skills required to thrive in, and positively impact, the world.

**MISSION:** We assure supportive learning environments, meaningful experiences and healthy relationships that create opportunities to develop resilience, to gain diversity in perspectives and to achieve enduring success.

## VALUES:

- Learning opportunities that are:
  - Purposeful
  - Essential
  - Relevant
  - Authentic
  - Responsive
- Excellence in achievement
- Trustworthy, respectful relationships
- Resilience with self-awareness.



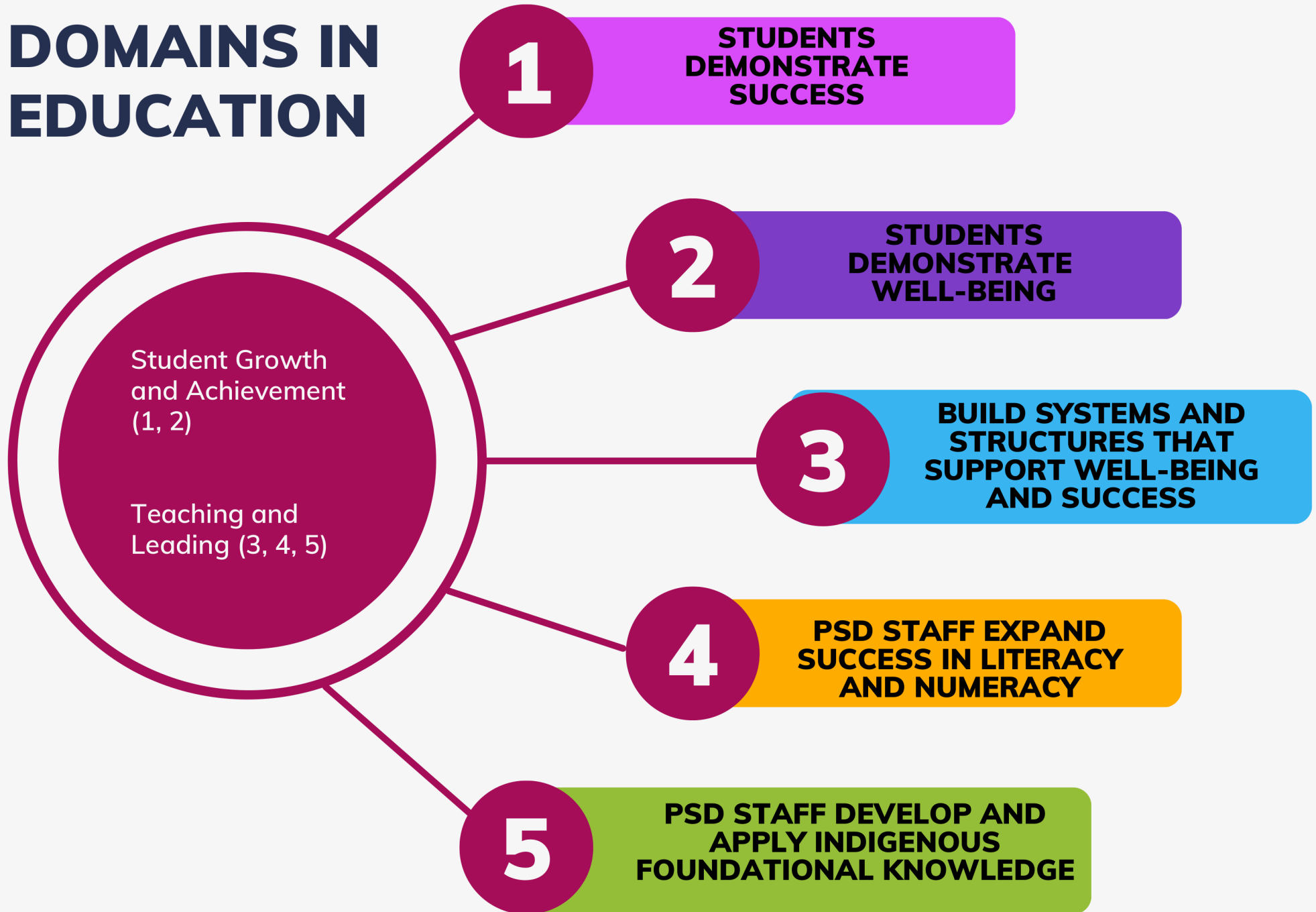
## OUR ULTIMATE GOAL: STUDENT SUCCESS AND WELL-BEING

Essentially, the ultimate goal for any school division should be focused on the combined achievement of success and well-being of its students. “Success and Well-Being” indicates how we take a balanced approach to creating an environment that supports academic achievement while also fostering a sense of safety, inclusivity, and emotional support for all of our 12,500 students.

Student success and well-being go hand in hand; students who feel supported and valued are more likely to succeed academically and socially. By prioritizing student success and well-being, our schools help our students to possess the confidence, resilience, insight, and skills required to thrive in, and positively impact, the world.



# DOMAINS IN EDUCATION





# Entwistle School Priorities

Staff at Entwistle School are mindful of Parkland School Division's Vision, Mission and Values, as well as the five Domains in Education. Our programming and pedagogy reflect our Division's priorities and we incorporate these goals into the work that we do throughout the year. For the 2023/2024 school year, we will continue our key area of focus on Student Success, especially in the areas of Literacy and Numeracy, and ensure that our staff expand their own teaching and assessment practices in these areas. We will also have a subsequent area of focus on Building Systems and Structures that Support Well Being and Success in order to ensure that there are ample ways that our Students Demonstrate Well Being.



**4****PSD STAFF EXPAND  
SUCCESS IN LITERACY  
AND NUMERACY****SO THAT****1****STUDENTS  
DEMONSTRATE  
SUCCESS**

**SCHOOL LEADERS, TEACHERS AND SCHOOL SUPPORT STAFF DESIGN, DELIVER AND SHARE RESEARCH-INFORMED, EFFECTIVE AND RESPONSIVE TEACHING AND ASSESSMENT PRACTICES TO PROMOTE STUDENT ACHIEVEMENT, WITH A FOCUS ON LITERACY AND NUMERACY. THE EXPECTED OUTCOME OF THIS WORK IS THAT STUDENTS DEMONSTRATE SUCCESS IN PRESCRIBED PROVINCIAL LEARNING OUTCOMES AND DEMONSTRATE POSITIVE, PERSONAL CHARACTERISTICS THAT CONTRIBUTE TO SUCCESS AND RESILIENCE.**

---

### **Literacy**

**This is a key area of focus at Entwistle School. Students from K-9 will demonstrate growth in all dimensions of literacy.**

The following Universal Screening Tools for Literacy Skills will be used to determine baseline data, inform instructional practices and interventions, and measure growth throughout the year:

- LeNS
- CC3
- Words Their Way
- Kindergarten Brigance Assessments
- RCAT Assessment
- Fountas & Pinnell Reading Assessment
- HLAT writing assessments
- Grade 6/9 Provincial Achievement Tests

As a staff we will examine this data at key points throughout the year so that we can work together to plan for effective teaching strategies and interventions across all grade levels.

### **Literacy Interventions**

Our focus is on small group instruction within the classroom. With the ongoing support and training of Division staff as well as our Literacy Lead Teacher, our students will benefit from “push-in” interventions that occur within the classroom. Students who are reading well below grade level and who require more support will have the opportunity for one-on-one or small group pull out interventions that will supplement the work done in the classroom.

Facilitators will work with staff throughout the year on introducing and refining effective teaching strategies to support learners with diverse needs.

This approach to interventions will build capacity in our teachers and ensure that students at all reading levels are provided with supports inside the classroom. Our students will receive targeted instruction at appropriate levels so that they can progress in their reading ability at a higher rate than they would without these interventions.



**4****PSD STAFF EXPAND  
SUCCESS IN LITERACY  
AND NUMERACY****SO THAT****1****STUDENTS  
DEMONSTRATE  
SUCCESS**

**SCHOOL LEADERS, TEACHERS AND SCHOOL SUPPORT STAFF DESIGN, DELIVER AND SHARE RESEARCH-INFORMED, EFFECTIVE AND RESPONSIVE TEACHING AND ASSESSMENT PRACTICES TO PROMOTE STUDENT ACHIEVEMENT, WITH A FOCUS ON LITERACY AND NUMERACY. THE EXPECTED OUTCOME OF THIS WORK IS THAT STUDENTS DEMONSTRATE SUCCESS IN PRESCRIBED PROVINCIAL LEARNING OUTCOMES AND DEMONSTRATE POSITIVE, PERSONAL CHARACTERISTICS THAT CONTRIBUTE TO SUCCESS AND RESILIENCE.**

---

### **Numeracy**

**This is a key area of focus at Entwistle School. Students from K-9 will demonstrate growth in all dimensions of numeracy.**

The following Universal Screening Tools for Numeracy Skills will be used to determine baseline data, inform instructional practices and interventions, and measure growth throughout the year:

- Kindergarten Brigance Assessments
- Alberta Education Numeracy Screens
- MIPI
- Grade 6/9 Provincial Achievement Tests

As a staff we will examine this data at key points throughout the year so that we can work together to plan for effect teaching strategies and interventions across all grade levels.

### **Numeracy Interventions**

Our focus is on small group instruction within the classroom. With the ongoing support and training of Division staff as well as our Numeracy Lead Teacher, our students will benefit from “push-in” interventions that occur within the classroom. Students who are performing well below grade level and who require more support will have the opportunity for one-on-one or small group pull out interventions that will supplement the work done in the classroom. Facilitators will work with staff throughout the year on introducing and refining effective teaching strategies to support learners with diverse needs.

This approach to interventions will build capacity in our teachers and ensure that students at all reading levels are provided with supports inside the classroom. Our students will receive targeted instruction at appropriate levels so that they can progress in their numeracy skills at a higher rate than they would without these interventions.

We will continue to build our numeracy resources at the school and work collaboratively throughout the year to ensure that teachers are aware of these resources and know how to use them effectively.

**3****BUILD SYSTEMS AND STRUCTURES THAT SUPPORT WELL-BEING AND SUCCESS****TO ENSURE THAT****2****STUDENTS DEMONSTRATE WELL-BEING**

**PSD STAFF DEMONSTRATE A COMMITMENT TO A COMPREHENSIVE AND INTEGRATED APPROACH TO SUCCESS AND WELLNESS. THIS APPROACH WILL BUILD A CULTURE WHERE STUDENTS ENGAGE IN HEALTHY AND FULFILLING SOCIAL BEHAVIOURS AND INVEST IN THEIR OWN WELL-BEING, WHILE PROMOTING A POSITIVE SENSE OF SELF AND BELONGING IN OTHERS.**

---

**This is a subsequent area of focus at Entwistle School. Staff will create systems and structures so that students will demonstrate well-being in a variety of ways.**

**Career Pathways**

This is a new area of focus for Entwistle School. We will provide multiple opportunities on Fridays for students to experience a variety of activities designed to help them to develop new interests and grow skills and competencies in order to build awareness and understanding of opportunities that are available to them. These classes will be available to all students and will be levelled to each age group. We are working within our community to recruit volunteers who will partner with us by committing to coming to Entwistle on Fridays for one month. During this time these volunteers will work with our staff to help provide meaningful, hands-on opportunities for our students to learn about different careers and explore project based learning aligned with that pathway. Suggested monthly themes are mechanics, carpentry, art, photography, cooking, theatre arts, agriculture, coding/robotics, outdoor education and digital communication. This approach will be of great benefit to our students as it provides each student with the opportunity to develop the skills that will help them achieve enduring success as they move along their educational journey.

**Community Connections**

We will reach out to community members and agencies to provide space for collaboration and opportunities for our students to access knowledge and expertise outside of the classroom. We will invite local professionals into the school to present on their careers and model success for our students. We will work with local businesses and agencies in order to determine creative ways to engage our students in their community and provide ways for them to access services that may otherwise be unavailable. The expected outcome is that students will develop a greater understanding of their community and see opportunities all around them. These partnerships will enhance Entwistle School's role as the hub of our community.

**Outdoor Pursuits**

We work in partnership with CFL so students can access Outdoor Pursuits programming on Fridays. This program of choice provides opportunities for students to take part in numerous off-site and nature based physical education programming. Families can apply for scholarships in order to cover the monthly fees.

**3****BUILD SYSTEMS AND STRUCTURES THAT SUPPORT WELL-BEING AND SUCCESS****TO ENSURE THAT****2****STUDENTS DEMONSTRATE WELL-BEING**

**PSD STAFF DEMONSTRATE A COMMITMENT TO A COMPREHENSIVE AND INTEGRATED APPROACH TO SUCCESS AND WELLNESS. THIS APPROACH WILL BUILD A CULTURE WHERE STUDENTS ENGAGE IN HEALTHY AND FULFILLING SOCIAL BEHAVIOURS AND INVEST IN THEIR OWN WELL-BEING, WHILE PROMOTING A POSITIVE SENSE OF SELF AND BELONGING IN OTHERS.**

---

**This is a subsequent area of focus at Entwistle School. Staff will create systems and structures so that students will demonstrate well-being in a variety of ways.**

**School Focus on PRIDE Virtues (Purposefulness, Resilience, Independence, Dignity and Empathy)**

We hold monthly assemblies where students receive recognition for demonstrating one (or more) PRIDE virtues. All students will be recognized at least once in the school year. These celebrations serve to enhance our school culture of kindness and community, and show our students and their families that their actions matter and we value their contributions to our school.

**Student Leadership**

In order to provide a more well rounded educational experience, staff will provide multiple opportunities for students to take part in student leadership planning and activities. Students will plan spirit days, lead assemblies and community events, and serve the school community. Staff will support student clubs that promote belonging and physical wellness, and hold school wide events such as carnivals and talent shows to allow students to take part in planning and participating in these activities. Our students will feel an increased sense of belonging and pride in their school. The leadership skills that students build will help them to develop the skills needed to positively impact their community and prepare for the next step in their educational journey.

**Counsellor**

We have a .2 counsellor on staff who comes to Entwistle every Thursday. The focus of this position is to provide ongoing mental health support for students who would otherwise be unable to access this support due to financial or geographical barriers. Our counsellor also works with teachers to create appropriate small group or classroom presentations to help enhance student wellness. This focus on mental health helps to build common language, understanding and skill about student wellness throughout the school community, and, by responding to identified needs, help our most vulnerable students find success in learning and life.

**Breakfast Program, Nutrition Nook, and Hot Lunch**

With the support of grants applied for by Parkland School Division, as well as through Brightwood Youth Ranch, we are able to provide daily breakfasts for all students as well as have an accessible fridge where students can access healthy snacks throughout the day. We believe in meeting our students' basic needs so that they are ready to learn, and know that community helps increase a sense of belonging and fosters an environment of caring. In addition, we have a parent volunteer who liaises with community members and businesses to ensure that all students have a free hot lunch once per week.



# 5

## PSD STAFF DEVELOP AND APPLY INDIGENOUS FOUNDATIONAL KNOWLEDGE

**ALL STAFF DEMONSTRATE AN UNDERSTANDING OF INDIGENOUS PERSPECTIVES AND ALLOCATE RESOURCES IN ORDER TO SUPPORT OUR INDIGENOUS STUDENTS' SUCCESS AND WELL-BEING.**

---

In the 2023/2024 school year Entwistle staff will continue to seek out Professional Development, both Division provided and external to our organization, to build foundational knowledge.

Students will have the opportunity to connect with and learn from the following:

- Nature - Based Educational Opportunities
- Guest Speakers and Presenters
- Knowledge Keepers, Elders, and Community Members





# Professional Development Plan

<b>Date</b>	<b>Location</b>	<b>Activity</b>
<b>August 29, 2023</b>	<b>Entwistle</b>	<b>Start-Up Operational Meeting; 2023/2024 Goal Setting</b>
<b>August 30, 2023</b>	<b>Entwistle</b>	<b>Facilitator #1 (Literacy, Numeracy, Wellness); Get to Know Our Students</b>
<b>August 31, 2023</b>	<b>Entwistle</b>	<b>River Walk</b>
<b>September 1, 2023</b>	<b>Entwistle</b>	<b>System-Directed PD AM</b>
<b>October 6, 2023</b>	<b>Entwistle</b>	<b>Facilitator #2 (Literacy, Numeracy, Wellness); Start-Up Data Analysis</b>
<b>December 22, 2023</b>	<b>Entwistle</b>	<b>Facilitator #3 (Literacy, Numeracy, Wellness)</b>
<b>February 16, 2024</b>	<b>Entwistle</b>	<b>Midterm Data Analysis, Teacher's Convention Follow-Up</b>
<b>March 22, 2024</b>	<b>Entwistle</b>	<b>Facilitator #4 (Literacy, Numeracy, Wellness)</b>
<b>May 17, 2024</b>	<b>Entwistle</b>	<b>Facilitator #5 (Literacy, Numeracy, Wellness)</b>
<b>June 28, 2024</b>	<b>Entwistle</b>	<b>Reflection on Year; Celebration of Success; Considering Next Year</b>

**NOTE:** Entwistle Staff may work in partnership with another PSD School and take part in a combined PD presentation led by a Division Facilitator in the areas of Literacy, Numeracy, New Curriculum, Supporting Diverse Learners, and/or Student Wellness.



# Stakeholders

Our stakeholders play a key role in planning and developing our school plan. The following stakeholders were consulted and their input considered in creating our vision for the 2023/2024 school year:

- Entwistle Students
- Entwistle Staff
- School Counsellor
- School Council
- Entwistle Parents
- PSD Colleagues
- Community Agencies

